

Introduction

GV-ASManager offers a network access control solution suitable for both small business and multinationals with facilities around the globe.

GV-ASManager can control up to 1,000 units of GV-AS / GV-EV Controllers. In addition, IP devices can be connected to GV-ASManager through network to provide live video and event associated playback.

Key Features

Access Control Functions

- Control up to 1,000 GV-AS / GV-EV Controllers
- Four access modes: Card only, Card and PIN Code, Card or Common mode, Release mode
- Alarm conditions available: door held open, door forced entry, tamper, access denied, duress, fire alarm
- SMS or E-Mail notification with user-defined content, video snapshot and user photo
- Up to 100 Web browser connections supported
- Up to 100,000 cards supported for GV-AS Controllers
- Up to 1,000 system users and 10,000 access groups
- Up to 256 time zones, weekly schedules and holiday planning for 14 months
- Multiple cards per user
- Enroll cards in batch mode
- Anti-Duress operation
- Anti-Passback capabilities
- Door Interlock
- Support Microsoft Access or SQL database
- Import/export of card and user data in Access or Excel file format
- User-defined screen layout and dual monitor display support
- Patrol Tour requiring security personnel to check in at the specified locations
- Integration of face recognition into security management with support for GV-Face Recognition Cameras / GV-AI FR (software) / GV-FR Panel (reader)
- Languages supported: English, French, Hebrew, Japanese, Persian, Polish, Portuguese, Russian, Serbian, Spanish, Traditional Chinese, Turkish

Video Integration

- Video integration with GeoVision software and IP devices (GV-DVR / NVR / VMS, GV-Video Server, GV-Compact DVR, GV-IP Camera) and third-party IP cameras
- Support for connecting to third-party IP devices using ONVIF, PSIA and RTSP protocols
- User-defined matrix of 16-channel multi-views
- Click on events to play back recordings immediately

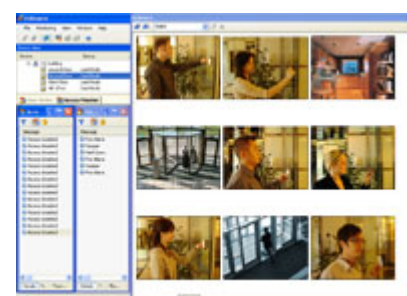
GV-ASRemote

- Monitor unlimited GV-ASManager over Internet
- Remote door monitoring, video playback, door operation



GV-ASManager

Installed in local PC, link to controllers
Main function: Management & Monitoring



GV-ASRemote

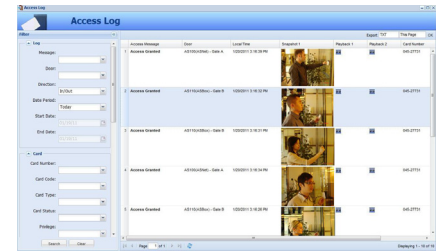
Installed in remote PC,
unlimited link to GV-ASManager
Main function: Monitoring & Basic control

GV-TAWeb

- Flexible workforce schedule arrangement
- Payroll calculation
- Attendance and payroll report search

GV-ASWeb

- Remotely watch live view from connected devices
- Remotely add or delete cards, users, controllers, access groups, cameras
- Remotely set up operator accounts, patrol tours, parking lots, and notification settings
- Web interface for historical log search with corresponding video and snapshot
- Log export in Excel, Text, HTML, Zip and PDF file formats
- View access data on Google Maps in the order of access time
- Track GPS positions of detected vehicles



GV-ASWeb

Web interface

Main function: Search historical event with synchronized video

GV-VMWeb

- Web interface for creating visitor database and granting access
- Visitor record search
- Visitor self registration

GV-Access Mobile Applications

- Access up to 5 GV-ASManager systems from iOS and Android mobile devices
- Watch live view from cameras associated with a door or lane
- Lock or unlock a door
- Check door status to see if any alarm events have occurred at a door
- Open LPR lanes



GV-Access Mobile Applications

Main function:

Remote control and monitoring

GV-Patrol Mobile Applications

- Access to patrol tours created from GV-ASManager
- Check in at patrol points
- View patrol status and historical tours

Minimum System Requirements

No of connected controllers		0-50	51~100	101~1000
OS	64-bit	Windows 10 / Server 2016 /2019		
CPU		Intel Core i3, 3.4 GHz (2 Cores, 2 Threads)	Intel Core i5, 3.4 GHz (2 Cores, 2 Threads)	Intel Core i7, 3.0 GHz (4 Cores, 8 Threads)
Memory		8 GB		
Database		MDB or Microsoft SQL database		
Hard Disk		500 GB		
VGA		PCI-Express, 1280 x 1024, 32-bit color and support DirectX 10		
DirectX		End-User Runtimes (November 2008)		
Software		.NET Framework 4.5 Microsoft SQL Server 2005 Express (optional)		
Browser		Internet Explorer 9.0 or later		

Licensing

Free License		4 controllers
Maximum License		1000 controllers
Increment for Each License		1 controller
Optional Combination		GV-AS Controllers + GV-Patrol
License Type	GV-USB Dongle	External or Internal
	Software License	GV-ASManager V5.3.0 or later only

Note: The Maximum License is a paid service.

Supported Software Versions

GV-DVR / NVR	GV-ASManager 4.2.1 – 4.2.3: V8.5.9.0 GV-ASManager 4.3: V8.6.0.0 GV-ASManager 4.3.5 – 4.4: V8.6.2.0 GV-ASManager 4.4.1: V8.6.2.0 – V8.7.0.0 GV-ASManager 4.4.2: V8.7.0.0 – V8.7.1.0 GV-ASManager 4.4.3: V8.7.1.0 GV-ASManager 5.0: V8.7.1.0 GV-ASManager 5.0.1.0 – 5.0.2.0: V8.7.3.0 GV-ASManager 5.1.0.0 – 5.1.1: V8.7.4.0 or V8.8.0 GV-ASManager 5.2.0 – 5.3.1: V8.8.0 GV-ASManager 5.3.2: V8.9.1
GV-VMS	GV-ASManager 4.3.5 – 4.4.2: V15.10 GV-ASManager 4.4.2: V15.10 – V15.11 GV-ASManager 4.4.3: V15.11.3 GV-ASManager 5.0: V16.11.0.0 GV-ASManager 5.0.1.0 – 5.0.2.0: V16.11.0.0 GV-ASManager 5.1.0.0 – 5.1.1: V17.1 – V17.2.0 GV-ASManager 5.2.0 – 5.3.1: V17.3.0 GV-ASManager 5.3.2: V17.4.1

Note: GV-ASManager does not support 3rd party controllers.

Options

GV-FR2020	GV-FR2020 is 13.56 MHz face recognition reader. GV-FR2020 can operate under Face Recognition mode, as well as other modes including Card, Card + Face Recognition and Password + Face Recognition.
GV-FWC	GV-FWC integrates GeoVision face-recognition-based cameras, software and readers into access control systems by sending access card data, paired to Face IDs, to controllers either through TCP/IP or Wiegand.
GV-GF Fingerprint Reader	GV-GF1921 / 1922 is a fingerprint reader, supporting three operation modes: Fingerprint only, Fingerprint + Card and Card Only. Readers with optical or capacitance sensors are available.
GV-IO Box Series	GV-IO Box series provides 4 / 8 / 16 inputs and relay outputs, and supports both DC and AC output voltages, with optional support for Ethernet module and 4E additionally supporting PoE connection.
GV-PCR1251 Enrollment Reader	GV-PCR1251 is a USB card reader, supporting 125 kHz, designed to assist with GV-AS ID Card / Key Fob enrollment to GV-ASManager.
GV-PCR1352 Enrollment Reader	GV-PCR1352 is a USB card reader, supporting 13.56 MHz, designed to assist with GV-AS ID Card / Key Fob enrollment to GV-ASManager.

Case Study



Along with powerful access controllers and other hardware accessories, GeoVision offers a series of complementary access control software including GV-ASManager, GV-ASWeb, GV-ASRemote, and GV-Access mobile applications to provide flexibility and scalability for both local and remote access control.

The diagram above shows how the access control software can be set up for a retail chain. GV-ASManager can be installed in local PCs of the chain stores and the headquarters can remotely monitor the chain stores using GV-ASWeb or GV-ASRemote. Using GV-Access mobile app, up to 5 GV-ASManager systems can be accessed from a mobile device.