

# ACL800-BC-USB-B

## ACL800 Biometric Capacitive learn-in reader - Fingerprint, Desktop, USB, EM/CASI Prox/HID Prox/ MIFARE Compatible

### Product description

ACL800-BC-USB is an USB desktop fingerprint and Proximity/Mifare reader that enables easy fingerprint and card enrollment. The USB desktop reader is used for transfer of the fingerprint to the ACL800 BioManager Software, writing the same fingerprint into a Mifare card, reading the card details and reading the card UID. The fingerprints are stored in the ACL800 BioManager software and can be uploaded in the installed readers, not in the desktop reader.

### The ACL800 range

The current ACL800 range is over 10 years old and is due for a refresh. The ACL800 range that consisted out of access readers, keypad readers and request-to-exit sensitive pushbuttons, has been extended with Biometric readers. There are two models, being the swipe and the touch capacitive biometric sensors. They are available in any combination of biometric swipe / touch capacitive, swipe / touch capacitive + keypad, swipe / touch capacitive + proximity reader, swipe / touch capacitive + Mifare reader.

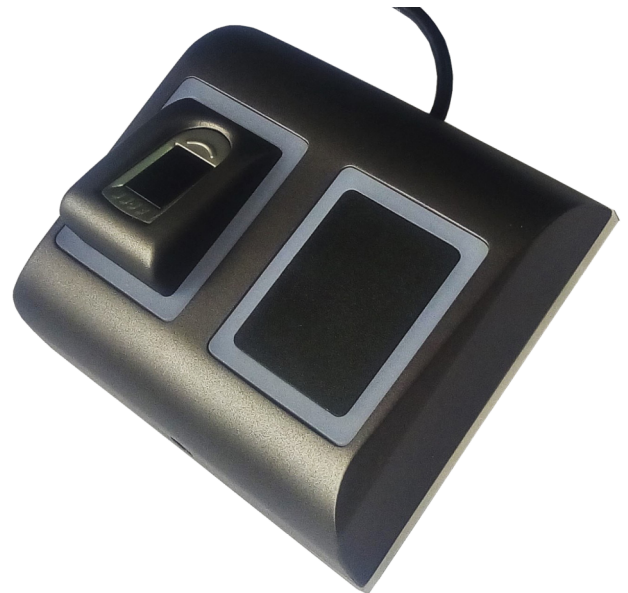
### Wiegand range

The Wiegand devices are ideal to be networked by using the TCP / IP to RS485 converter ACL800FL-CONV-W. Up to 31 Wiegand devices can be daisy-chained over RS485 and are managed by the ACL800 BioManager. When you need more devices, then simply add another converter. The access rights can be uploaded from the ACL800 BioManager to all the Wiegand devices connected to the converter. You have the option to either store the fingerprint templates in the reader or on the credential for privacy reasons.

### ACL800 BioManager

Fingerprint and reader management software for biometric readers when used with third party access control systems. Fingerprint enrollment is done from any networked biometric reader or from a USB desktop enrollment unit. The fingerprints could be sent to one or all biometric readers in the network. ACL800 BioManager is a free application and also manages the access levels.

Compatible with : Windows 7, Windows 8 and Windows 10.



### Details

- Indoor/outdoor
- Attractive and timeless design
- Tri-color LED's
- Desktop reader
- Backlight illumination
- Two-factor authentication
- Biometric fingerprint reader with Proximity / Mifare card enrollment
- Store Fingerprint on card

# ACL800-BC-USB-B

## ACL800 Biometric Capacitive learn-in reader - Fingerprint, Desktop, USB, EM/CASI Prox/HID Prox/ MIFARE Compatible

### Technical specifications

#### Technology

Reader type	BioMetric, Proximity, Smart Card
Reader operating-transmitting frequency	125 KHz, 13.56 MHz
Supported technology 13.56 MHz	MIFARE Classic (CSN), MIFARE DESFire (CSN), MIFARE DESFire EV1 (CSN), Mifare DESFire EV2 (CSN), MIFARE Plus (CSN), MIFARE Ultralight (CSN)
Supported technology 125 kHz	EM4102, GE ProxLite/CASI Prox, HID Prox
Mifare type	ISO14443A
No. of Mifare bytes CSN	4 Byte (S50), 7 Byte (S70)

#### System

Reading distance	Casi-Rusco & HID up to 4 cm, EM up to 6 cm Mifare : 1.5 to 5.5cm
Max. reader distance to panel	50 m
RTE (Request To Exit)	No
CSN (Card Serial Number)	Yes
No. of LEDs	3
No. of covers included	1

#### Biometric

Biometric type	Fingerprint
Biometric sensor type	Capacitive
Biometric template storage size	up to 9500 fingerprints
Fingerprints per user	1-10 fingerprints
1:1000 identification time	970 msec, including feature extraction time

#### Interface & connections

Interface	Wiegand
Connector type	Pigtail
Pigtail length	100 cm
Protocol programming	By ACL800 BioManager Software
Interface	Wiegand 24 to 80 bits; Default: Wiegand 26bit

#### Tamper type

Pry-off tamper	No
Opening tamper	Yes

#### Operation

Stand-alone	No
PIN keypad	No
Authentication	Finger, Finger or Card, Finger or/and Card, Finger On Card
Windows compatibility	Windows 7, 8, 10

#### Support

Language installation manual	English
------------------------------	---------

#### Electrical

Power supply type	USB
-------------------	-----

#### Physical

Physical dimensions	100 x 94 x 30 mm
Net weight	50 g
Shipping weight	120 g
Colour	Black
Material	ABS
Form factor	Oversized
Mounting type	Surface Mount

#### Environmental

Operating temperature	-20 to +50°C
Storage temperature	-20 to +50°C
Relative humidity	0 to 95% noncondensing
Environment	Indoor / Outdoor
IP rating	40

#### Standards & regulation

Compliance	CE, RoHS
------------	----------

As a company of innovation, UTC Fire & Security reserves the right to change product specifications without notice. For the latest product specifications, visit UTC Fire & Security online or contact your sales representative.

