

# ACL800 BioManager

## ACL800 BioManager (Free)

### The ACL800 range

Introducing the new range of ACL800 readers with expanded functionality and refreshed design, to offer optimal flexibility and value in smaller-scale environments. Whether for a store, a small office or a guest house, ACL800 is all that you need for entry-level card, PIN or biometric access control. The ACL800 range that consisted out of access readers, keypad readers and request-to-exit sensitive pushbuttons, has been extended with Biometric readers. There are two models, being the swipe and the touch capacitive biometric sensors. They are available in any combination of biometric swipe / touch capacitive, swipe / touch capacitive + keypad, swipe / touch capacitive + proximity reader, swipe / touch capacitive + Mifare reader.

### ACL800 BioManager

Fingerprint and reader management software for biometric readers when used with third party access control systems. Fingerprint enrollment is done from any networked biometric reader or from a USB desktop enrollment unit. The fingerprints could be sent to one or all biometric readers in the network. ACL800 BioManager is a free application and also manages the access levels.

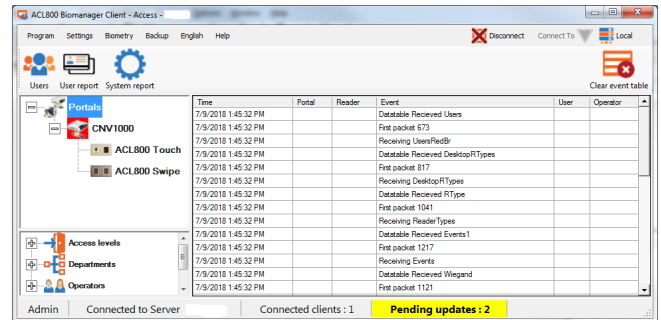
Compatible with : Windows 7, Windows 8 and Windows 10.

### Wiegand range

The Wiegand devices are ideal to be networked by using the TCP / IP to RS485 converter ACL800FL-CONV-W. Up to 31 Wiegand devices can be daisy chained over RS485 and are managed by the ACL800 BioManager.

When you need more devices, then simply add another converter. The access rights can be uploaded from the ACL800 BioManager to all the Wiegand devices connected to the converter.

You have the option to either store the fingerprint templates in the reader or on the credential for privacy reasons.



### Details

- Freely available application to manage Wiegand range of ACL800 products
- Fingerprint and PIN code management software
- Allows connection and set-up of all ACL800 biometric readers to any third-party controller
- Enrollment can be done from any biometric reader on-site or from a USB desktop enrollment unit
- Fingerprint templates storage.
- Upload fingerprint templates to all biometric readers in a network

# ACL800 BioManager

## ACL800 BioManager (Free)

### Technical specifications

---

#### Technology

Reader type	BioMetric, Multi-frequency, PIN, Proximity, Smart Card
-------------	--

---

#### Biometric

Biometric type	Fingerprint
Biometric sensor type	Capacitive, Swipe
Biometric template storage size	up to 9500 fingerprints (Capacitive Touch), up to 100 fingerprints (Swipe)
Fingerprints per user	1-10 fingerprints
Fingerprint enrollment	On the reader or from the USB desktop reader
Protocol programming	By ACL800 BioManager (all access control systems)

---

#### Interface & connections

Interface	Ethernet
-----------	----------

---

#### Operation

Bio + Keypad	Finger and / or PIN Code
Bio + Mifare Reader	Finger and / or Card
TCP / IP to RS485 converter	ACL800FL-CONV-W
Wiegand range	Up to 31 Wiegand devices can be daisy chained over RS485
Client-Server software	Multiple users can connect on the server PC
Compatible with	Windows: 8, 7, Vista, Server 2008, Windows 10
Application type	Windows service
Startup	Starts with Windows, no Windows user login required
Maximum connected Clients	Unlimited
Maximum number of Servers	Unlimited, connected to one Server at the time
Import/Export users	Yes, from/to Excel
Access levels	Yes
Client-Server communication	Encrypted, dynamic key
Database	Microsoft Access
Report export films	PDF,XLS,CSV,XML,HTML,RTF,TEXT

---

#### Support

Language installation manual	English
------------------------------	---------

---

As a company of innovation, UTC Fire & Security reserves the right to change product specifications without notice. For the latest product specifications, visit UTC Fire & Security online or contact your sales representative.

Last updated on 31 October 2019 - 10:22



**United Technologies**

Climate | Controls | Security