

ACL800FLW-BC

ACL800 Biometric Capacitive reader - Fingerprint, Wiegand, Flush mount, 9500 Templates, Electronic only (no frame included)

Product description

ACL800FLW-BC is a Wiegand biometric reader for access control applications. It offers storage up to 9500 fingerprints and has a programmable Wiegand Output (26 to 80 bits). Configuration of the readers and fingerprint enrollment is done through ACL800 BioManager Software. Connection between the biometric readers is RS485 and it is used for fingerprint transfer and configuration. The connection between the Biometric readers and the PC is done through a ACL800FL-CONV-W converter (RS485 to TCP/IP). Only one converter is needed per system and supports up to 31 Biometric readers.

The ACL800 range

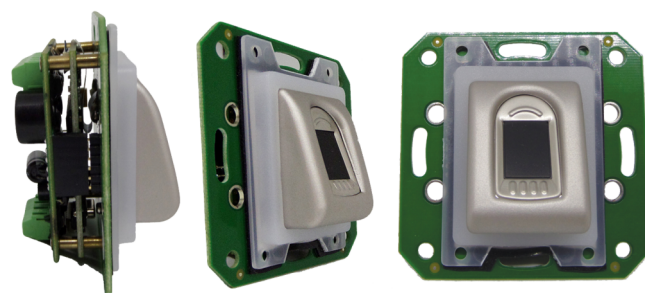
The ACL800 Series consists of all the required elements to establish a range with a state-of-the-art design. This new range, consisting of readers, stand-alone keypad readers and Request-To-Exit touch sensitive push buttons, provides all you need for a coherent look-and-feel attractive project. The product line has now expanded new biometric readers.

Card technology

The readers are compatible with the TruPortal (125 KHz) credential range and other industry standards like MIFARE Classic, - Plus, - Ultralight and - DESFire EV1. These technologies use the CSN (Card Serial Number) or UID (Unique Identifier) as credential identifier. The wiegand output (32 or 56 bit) is automatic according to the card type and ensures uniqueness of the MIFARE CSN with 4 and 7 Byte UID. The Proximity card type can be selected through DIP switches in "HID only"

Compatibility

The ACL800 reader range is compatible with the TruPortal learn-in reader (TP-RDR-LRN) for learning-in credentials in access control panels like TruPortal. This compatibility is provided for both the 125 KHz and the 13.56 MHz credentials, while using the full wiegand format length in the management software (also with other third-party packages). There are different mounting possibilities: either flush mounted within the electrical wall sockets or surface mounted with a stylish, small, modern-looking molded design.



Details

- Indoor - in a electrical gang box
- Dust proof (IP40)
- Attractive and timeless design
- Includes a buzzer
- Tri-color LED's
- Flush mount
- Backlight illumination
- Simple one-door standalone biometric system
- Reader programming is quick and easy via ACL800 BioManager

ACL800FLW-BC

ACL800 Biometric Capacitive reader - Fingerprint, Wiegand, Flush mount, 9500 Templates, Electronic only (no frame included)

Technical specifications

Technology

Reader type	BioMetric
-------------	-----------

System

Max. reader distance to panel	50 m
RTE (Request To Exit)	No
CSN (Card Serial Number)	No
No. of LEDs	3
No. of covers included	1

Biometric

Biometric type	Fingerprint
Biometric sensor type	Capacitive
Biometric template storage size	up to 9500 fingerprints
Biometric Sensor Type	Touch Capacitive
Programming	ACL800 BioManager (all access control systems)
Fingerprint enrollment	On the reader or from the USB desktop reader

Interface & connections

Connector type	Terminal Strip
Interface	Wiegand 26 to 80 bits; Default: Wiegand 26bit

Tamper type

Pry-off tamper	No
Opening tamper	Yes

Operation

Stand-alone	No
Stand-alone no. of users	100
PIN keypad	No
Green LED	Potential Free
Red LED	Potential Free
Orange LED	Idle mode
Illumination	Blue backlight (programmable on/off control)
Buzzer	1
Door time	Pulse (1-30 s) or Toggle (ON/OFF)
Entry mode	Finger (basic installation) Finger or Card (when used with card reader) Finger or PIN code (when used with keypad)

Support

Language installation manual	English
------------------------------	---------

Electrical

Power supply type	VDC
Power supply value	9 to 14 VDC
Current consumption	100 mA at 12 VDC max

Physical

Physical dimensions	80 x 80 x 9 mm
Colour	Silver
Material	Moulded aluminium
Form factor	Oversized
Mounting type	Flush Mount

Environmental

Operating temperature	0 to +40°C
Storage temperature	-20 to +50°C
Relative humidity	5% to 93% RH noncondensing
Environment	Indoor

Standards & regulation

Compliance	CE, RoHS
------------	----------

As a company of innovation, UTC Fire & Security reserves the right to change product specifications without notice. For the latest product specifications, visit UTC Fire & Security online or contact your sales representative.

