

TripTick® ATR200

Barcode Reader



The state-of-the-art Access-IS TripTick reader is designed to read 1D/2D barcodes from mobile phones, tablets, wearables and paper in any orientation.

TripTick offers operators the ultimate no-nonsense installation. Its small footprint, low profile and slot-in design enables easy integration into kiosks, ticket machines, turnstiles and access gates. Furthermore, its rugged water-resistant construction with no moving parts, enables it to withstand years of indoor and outdoor public access use.

An option for Power over Ethernet (PoE) allows installation without a dedicated power supply.

TripTick retains the key aspects of the size and shape of the proven LSR116 and LSR118 products, however its

design delivers a significantly increased active scan area, to improve even further its barcode reading performance.

TripTick's optimised imaging ensures read reliability and high-speed performance; capturing and decoding all popular linear, PDF417 and 2D symbologies.

Features

- Low profile design: Only 36.9mm high
- Front face sealed for integration into indoor or outdoor kiosks, podiums and gates
- Optimised focal distance design improves read performance for all paper and electronic media
- Intuitive operation with LED user feedback
- Reads 2D, PDF417 and linear symbologies
- Single cable connection to host computer
- USB (HID, serial or keyboard), RS232, RS485, Ethernet interface options
- Option for Power over Ethernet (PoE)
- Capable of RS422 connection at up to 1500m
- Access UltraGlass® option for extreme environments

Applications

- Self-service kiosks and ticket vending machines
- Access control gates and turnstiles for stadia, building access and transportation
- Retail voucher redemption and loyalty cards
- Car park ticket machines and automatic barriers
- Casino and TITO gaming machines



TripTick® ATR210

Barcode & RFID/NFC Reader



The Access-IS TripTick ATR210 combines all of the features and capability of the ATR200, but adds NFC/RFID to offer an especially intuitive and quick interface for data reading and writing. TripTick works with all popular contactless cards – including Mifare® (Classic®, Ultralight®, DESfire®, Plus), ISO14443 Type A & Type B cards, mobile phones in HCE mode.

NFC (Near Field Communication)

NFC is a standard form of communication between an NFC reader and NFC supported media like smartcards, tags, smart phones and wearables. NFC technology has gained more popularity as it is increasingly used in ID documents and mobile devices. The distance of communication is usually a few centimetres so that the users are aware of their contactless media communicating with the reader.



Features

- Reads barcodes and NFC devices from a single point of presentation
- Low profile design: Only 36.9mm (51.2mm with PoE/SAM housing)
- Front face sealed for integration into indoor or outdoor kiosks, podiums and gates
- Optimised focal distance design improves read performance for all paper and electronic media
- Intuitive operation with LED user feedback
- Reads 2D, PDF417 and linear barcode symbologies
- ISO14443 Type A/B
- Single cable connection to host computer
- USB (HID, serial or keyboard), RS232, RS485, Ethernet interface options
- Option for Power over Ethernet (PoE)
- Capable of RS422 connection at up to 1500m
- Access UltraGlass® option for extreme environments

Applications

- Self-service kiosks and ticket vending machines
- Access control gates and turnstiles for stadia, building access and transportation
- Retail voucher redemption and loyalty cards
- Car park ticket machines and automatic barriers
- Casino and TITO gaming machines

TripTick® ATR220

Barcode, RFID/NFC and cEMV Payment Device



The Access-IS TripTick ATR220 combines all of the features and capability of the ATR200 and ATR210 but is EMV Level 2 certified, allowing for applications where contactless payments are required.

TripTick is EMV Level 2 capable and with PCI and SRED compliance for contactless payments using VISA, MasterCard, AMEX and Discover payment schemes.

EMV Levels 1 & 2

EMV contactless Level 1 certification ensures that the device meets the lower level electromagnetic and communication protocol requirements. It includes operating distance tests where reference cards are placed at a set of predefined positions in proximity to the device's antenna. It further covers analogue tests on the used frequency and digital tests on the low-level communication protocol, for example.

EMV contactless Level 2 certification is concerned with the validation of the software that implements the payment functionality and that runs on the Level 1 certified device. This software is referred to as a payment kernel. The contactless payment brands to be supported (e.g. MasterCard/Maestro Contactless, VISA payWave or American Express contactless) determine which of the payment kernels are to be implemented.

Features

- Integrated EMV L2 Payment Kernels with Level 2 Certification (VISA, MasterCard, AMEX, Discover)
- PCI SRED - V5.0
- Configurable payment terminal settings, including currency, max limit, etc.

Applications

- Financial and other self-service kiosks
- Ticket validation for public transport, car parking, stadia and events
- Retail POS terminals
- Casino and TITO gaming machines



TripTick® Product Options

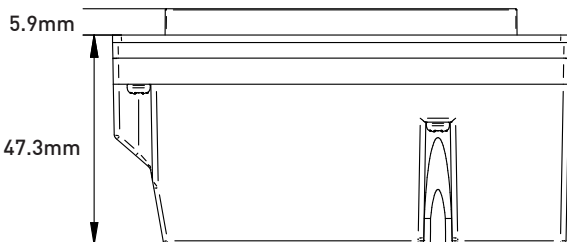
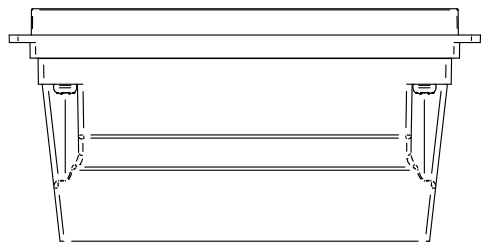
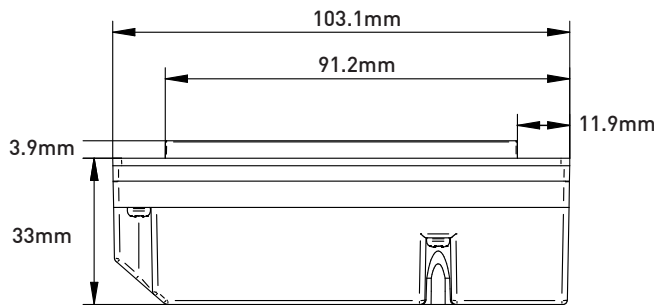
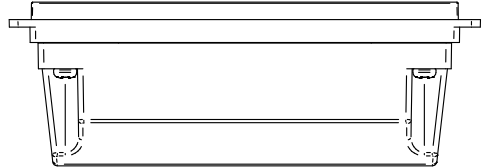
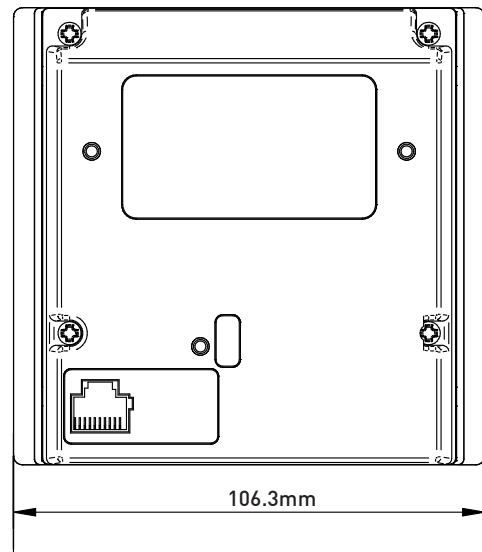
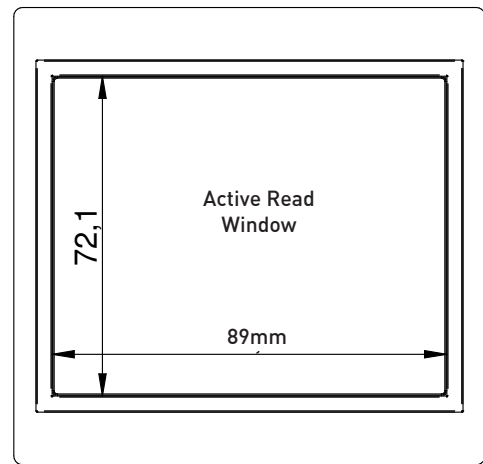
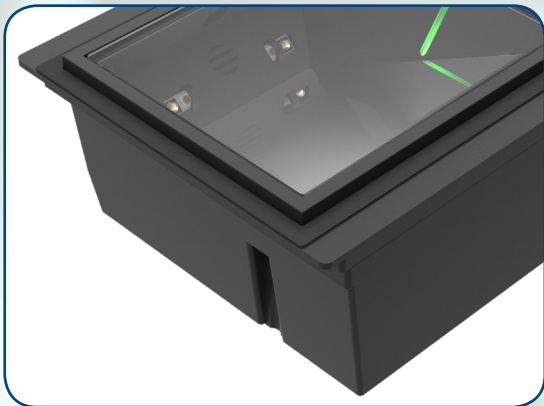
Access UltraGlass®

For environments with highly abrasive elements such as sand and grit, an innovative UltraGlass option is available that delivers significantly enhanced scratch-resistance. This upgrade helps alleviate the possibility of scratching which may, in severe circumstances, affect the barcode reading performance. This option also allows the use of tools such as metal scrapers to remove paints or adhesives from the window during maintenance or repair.



SAM (Secure Access Modules)

The option of installing up to four SAM modules within the device is available. (ATR210 & ATR220 Only)



Rear Enclosure
for PoE/SAM
(ATR210 & ATR220 Only)

All trademarks acknowledged. Specifications subject to change without prior notice. This literature is for outline information only. Ver: 1.3 Sep 2019



Worldwide: +44 118 966 3333
Americas: +1 770-645-2771



Worldwide: +44 118 966 3333
Americas: +1 703-403-6848



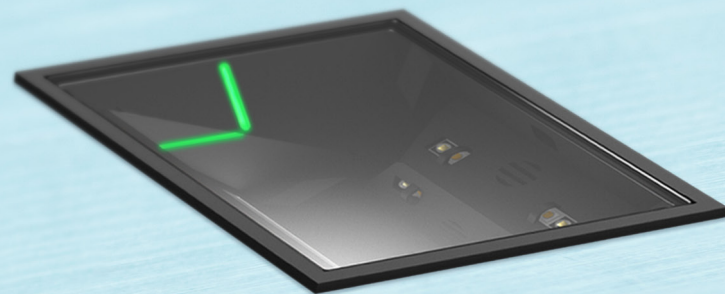
Worldwide: +44 118 966 3333
Americas: +1 484 258 1359



email: sales@access-is.com
18 Suttons Business Park • Reading • RG6 1AZ • UK

TripTick® One Reader... Any ticket

Ultra compact barcode reader with
optional RFID/NFC and
contactless payment capabilities
(EMV Level 2 & PCI SRED)



Access IS
www.access-is.com