



IS2000 V10



SECURITY MANAGEMENT SOFTWARE

Innovations in Security for Your Business



IS2000 MODULES

- THICK/THIN CLIENT(S)
- ID BADGING
- VIDEO MANAGER
- GUARD TOUR
- ATTENDANCE REPORTING
- SDK (SOFTWARE DEVELOPMENT KIT)
- DATA IMPORT UTILITY

ACCESS CONTROL

- AXIS A1001
- HID VERTX/EDGE
- MERCURY
- ZK ACCESS (ACP/INBIO)
- BIOMETRICS
- WIRELESS AND POE LOCKS

VIDEO PLATFORMS

- MILESTONE
- ONSSI
- VIDEO INSIGHT
- SALIENT SYSTEMS
- EXACQ TECHNOLOGIES
- IPCONFIGURE

ALARM / INTRUSION

- BOSCH
- ELK
- DMP

HVAC AND FIRE

- INOVONICS
- EDWARDS FIRE PANEL
- SERIAL/NETWORK INTERFACE

GROW YOUR BUSINESS, YOUR WAY, WITH TRULY OPEN ARCHITECTURE

EXPAND YOUR ENTERPRISE

While many manufacturers offer narrow definitions of what open architecture means to them, at IMRON, we're focused on what it can mean for you. We understand that you have a vision to take your successful business to an even better place. Through our genuinely open architecture, we give you real choices that will help you get there, in a way that works best for you.

The IS2000 Security Management software can scale seamlessly from a single corporate office to a global enterprise solution. The software is easy, flexible, and powerful. With the ability to takeover most legacy access control systems, the customer can retain the previous investment, while expanding with newer technology. All of this can be managed in a seamless IS2000 software environment.

A Revolutionary Approach

EXTEND YOUR DESKTOP

The IS2000 GUI (Graphical User Interface) runs in one of two modes: Desktop or Application. In Desktop Mode, IS2000 will act as an extension to the Windows OS, while integrating seamlessly with the Windows Taskbar. All Windows based files, security modules and building management tools can be dragged and dropped anywhere on the IS2000 Desktop as customized tiles, which can be configured for each user.

Third Party Integration

CUSTOMIZE YOUR SOLUTION

Integration to IS2000 can be achieved via our SDK (Software Development Kit). The SDK supports an open XML protocol that can perform ALL field related commands as well as the ability to retrieve data and real-time events and alarms.

The Data Import Utility can be used to import data from a third party application. The import process can be scheduled to occur at periodic intervals or manually performed. Below is a list of supported data sources:

- Active Directory
- ODBC (Open Database Connectivity)
- CSV (Comma Separated Values Text File)
- TAB (Tab delimited Text File)

CUSTOM COMMANDS

Define custom commands on a per user basis to perform various system related tasks, such as a facility lockdown, camera call-up, launching an application, initiating a pre-canned text or email message, etc...

WEB INTERFACE

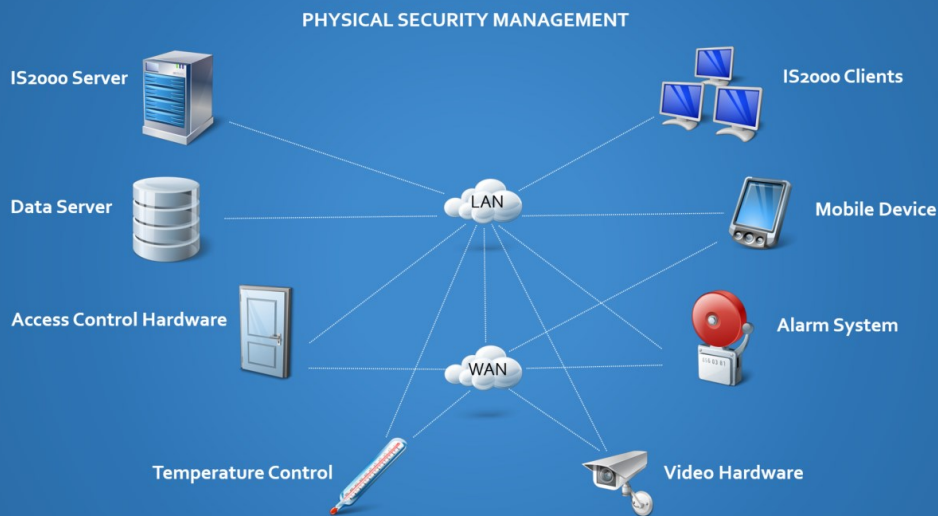
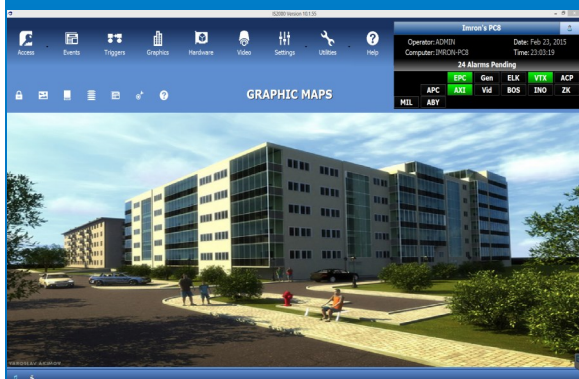
Access your system from any web browser via our thin client. No software to load. The IS2000 Thin Client includes management and basic administration of the system.

GLOBAL I/O LINKING

Link events that occur in one system to execute action sequences in other systems. All triggers are based on specific pre-defined conditions and can span across disparate systems. For example, an alarm system can trigger a video camera to do a quick record and send out a text message.

GRAPHIC MAPS

Graphically see what's going on throughout the facility, with real-time camera call-ups, as well as real-time status of all doors, control points, and monitor points. Control multi-layered devices based on their floor plan positioning.



PHYSICAL SECURITY MANAGEMENT

IS2000 manages disparate security devices and systems into a single user interface. Data from these systems are managed bi-directionally and can be synchronized with HR Systems via web services. The distributed intelligent network architecture allows all of the access control and security decisions to execute and record, even if communication is lost with the host computer.

IS2000's open architecture and modular design allows the customer to expand the system based on the features and requirements of the site(s) being managed. The software has the ability to simultaneously manage traditional hardware platforms and newer web based IP controllers and readers from its seamless environment.

APPLICATION MANAGEMENT

Manage all of your applications in one easy to use Desktop, by running IS2000 in 'Desktop Mode'. Applications are represented by tiles that the operator can customize by assigning color, icon, and text. These applications can be set to execute manually or based on any system based event that occurs in the field.

REPORTING

Generate reports on anything that happens in the system using either our pre-canned reports or custom reports that you create. All reports can be set on a schedule to execute or called up manually.

- Standard and advanced custom filtering.
- Export Options: PDF, HTML, XML, CSV, Open Document
- Printing Options: Any network or local printer with a Windows printer driver



IMRON Corporation

Founded in 1997, IMRON Corporation is a leading provider of Access Control Solutions. Always on the forefront of technology and innovation, IMRON Corporation is committed to open architecture solutions. IMRON's comprehensive software platform, IS2000 v10 offers revolutionary control of all physical security requirements. Fully scalable and customizable, IS2000 v10 is THE non-proprietary "open" solution.

IMRON Corporation's solutions have been installed and field-tested in more than eight thousand sites throughout the world. Company founder was the first to develop a fully integrated Windows based software application that integrated Access Control, Video Management, and Alarm Management back in 1993.

At IMRON Corporation, customer responsiveness is vital in maintaining product innovation. This customer centric strategy ensures the highest 'convergence' of technology and user acceptance and is the key to IMRON's success.



15375 Barranca Pkwy, B-106
Irvine, CA 92618

Toll Free: 877-OK-IMRON
Phone: 949-341-0947
Fax: 949-341-0949
Web: www.imron.com
Email: sales@imron.com

Innovations in Security for Your Business