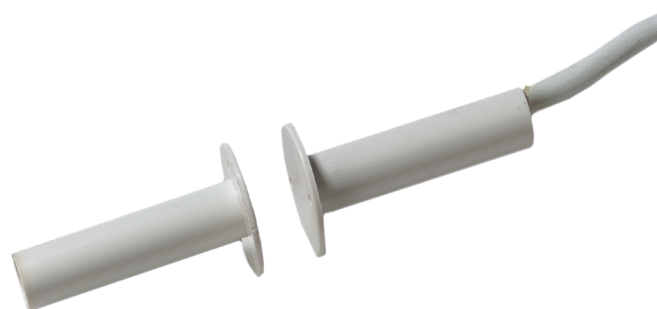


MM110

Contact, Recess Mount.



Details

- Robust design
- 4 Wire connection
- Easy installation
- Passive tamper
- Fully encapsulated
- ABS body
- Long life Rhodium contact

MM110

Contact, Recess Mount.

Technical specifications

General

Application type	Recessed Mount
Contact type	NC
Connectivity	4 wires, 2 m

Wired/wireless

Wired-wireless	Wired
----------------	-------

Electrical

Voltage	1 to 50 VDC
Contact power	Max. 10 VA
Switching current	max 500mA

Physical

Colour	White
Diameter	8 mm
Dimensions contact / sensor	8 x 33 mm (Ø x L)
Operating gap	15 mm (max.)