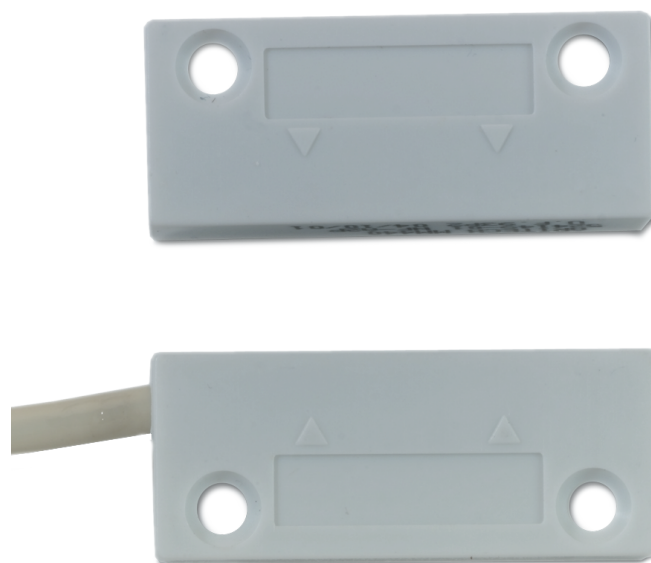


MM440

Magnetic Contact Surface Mount, 85 cm Jacketed Cable



Details

- Ideal for residential applications
- Easy to install
- Tamper loop

MM440

Magnetic Contact Surface Mount, 85 cm Jacketed Cable

Technical specifications

General

Application type	Surface Mount
Contact type	NC
Connectivity	4 wires, 85 cm

Wired/wireless

Wired-wireless	Wired
----------------	-------

Electrical

Voltage	max. 200 VDC
---------	--------------

Physical

Colour	White
Dimensions magnet	14 x 35 mm
Dimensions contact / sensor	14 x 35 mm
Operating gap	11 mm (max.)

Environmental

Operating temperature	-10° to +55° C
IP rating	IP30

