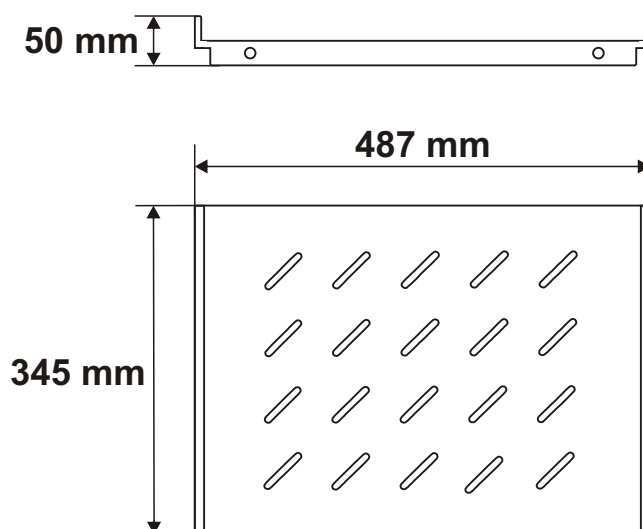
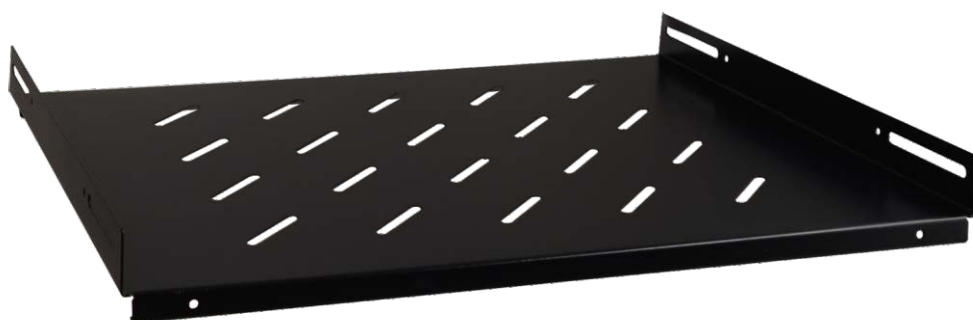


CODE: **RAPS600D v1.0/l**
NAME: **Fixed shelf 485x345 for RACK cabinet, type RWD**

EN

INTENDED USE

The fixed shelf is intended for a 600mm deep RACK cabinet, type: RWD. Due to the shelf, the RACK cabinet can accommodate devices that are not housed in a RACK 19" enclosure

SPECIFICATIONS

External dimensions:	W=487, H=50, D=345 [mm, +/-2]
Dimensions of the shelf:	W=485, D=345 [mm, +/-2]
Net/gross weight:	1,91 / 2,00 [kg]
Materials:	1,2 mm steel sheet, RAL 9004
Static load:	60 kg
Use:	inside
Notes:	- four-point fixing to the side RACK rails - mounting set includes: 4 M6 screws, cage nuts, plastic washers